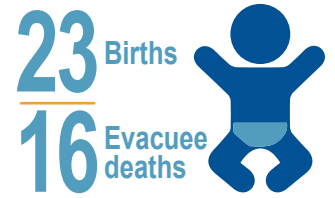
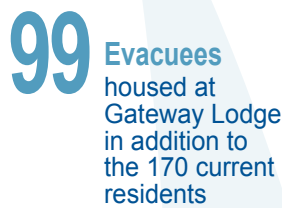
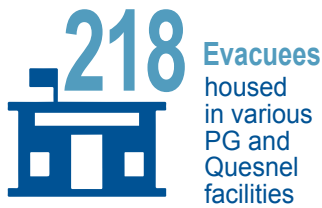
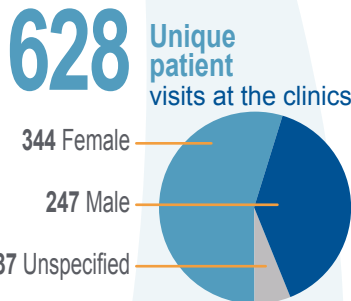
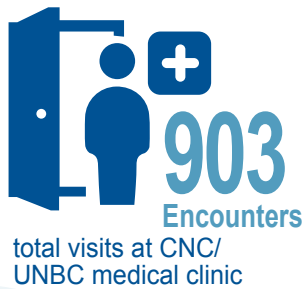


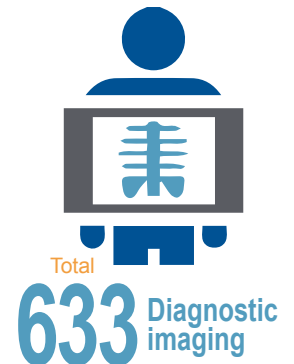
JULY 7 - AUG 23, 2017



COMMUNITY CLINIC



ACUTE CARE & DIAGNOSTIC



- Total
- 101 Ultrasounds
 - 7 MRIs
 - 98 CT scans
 - 405 X-rays
 - 6 Bone density scans
 - 6 Nuclear medicine scans
 - 6 Mammograms
 - 4 Interventional Radiology (IR)

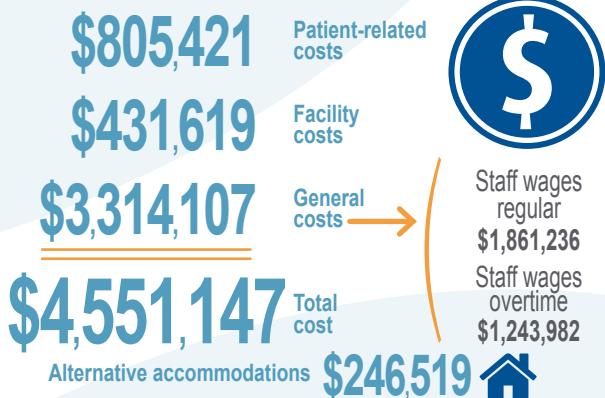
LOGISTICS & REPATRIATION



PHYSICIANS



FINANCIAL



HUMAN RESOURCES

